


New Zealand Permit No. 176761 **Permit** 

Sample Medical Centre

PRIVATE AND CONFIDENTIAL

If Undelivered, return to P O Box 6032, Dunedin 9059

2014 Annual Practice Report

Pharmaceutical and Laboratory Test Utilisation



bpac nz
better medicine

Welcome to your annual report

This report has been developed to give you an opportunity to reflect on the treatment received by patients **registered at your practice** in the past year. It summarises the most commonly dispensed medicines and laboratory tests requested for those patients between 1 July, 2013 and 30 June, 2014.

Methods

The data in this report is based on three of the Ministry of Health's National Collections. The collections used in this report contain data provided to Sector Services (formerly HealthPAC) and National Collections and Reporting through the General Transaction Processing System:

- The Pharmaceutical Collection holds claim data submitted by pharmacies for all community dispensings of subsidised medicines.
- The Laboratory Claims Collection contains claim data for publicly funded laboratory tests performed in community laboratories. Laboratory tests performed in hospitals are not included in this collection.
- The Primary Health Organisation Enrolment Collection holds patient enrolment data for 4.27 million patients registered to 1033 New Zealand general practices.

As our data is provided by the Ministry of Health, bpac^{nz} has no control over errors which may occur at the pharmacy, laboratory, Sector Services or Ministry of Health. Some errors may also be due to rounding.

In this report, cost is the standard price at which a medicine is supplied to wholesalers, exclusive of GST, dispensing fees, markup and rebates. Therefore the cost listed is not necessarily the actual cost of this medicine.

Data has been excluded for patients who are not registered to a practice in the PHO Enrolment Collection. Enrolled patients accounted for 98% of pharmaceutical dispensings and 99% of laboratory investigations recorded in the National Collections. Therefore data has also been excluded when a National Health Index (NHI) number was not recorded for the patient.

This report includes data on dispensed subsidised medicines. Any medicines prescribed to your patients that were not dispensed by a community pharmacy, or are unsubsidised, will not appear on this report.

Important Note

Some medicines dispensed and tests performed for your registered patients are likely to have been prescribed, or requested by New Zealand healthcare professionals who do not work at your practice, and will not necessarily be listed if you audit your Practice Management System. They are included in this report to provide you with an overall view of the care received by your registered patients.



Individual prescribing reports

If you would like to review your annual **individual prescribing report** please log in to 'My bpac' at www.bpac.org.nz. You can then find your report by navigating to 'Your personalised reports'

Changes to the report

Based on feedback we have received in the last year we have modified the report in an attempt to make it more relevant to prescribers. The main changes are outlined below:

1. Number of medicines and tests reported

Instead of listing dispensing rates for all 755 medicines and all 188 laboratory tests available we have included the 250 most commonly dispensed medicines and the 75 most commonly performed tests. These make up over 90% of all dispensings and laboratory tests performed in the community in New Zealand.

2. Number of items

Item numbers refer to stat dispensings (entire 3 month supply) and initial dispensings only – these numbers do not include repeat dispensings, e.g. if a patient is taking a long term medicine and was compliant they should have four initial dispensings per year for that medicine. This eliminates the ‘over-counting’ of medicines that have more frequent dispensing rates, e.g. methadone which may be dispensed weekly or daily.

3. Quartiles

To allow you to make comparisons with practices of similar size we have created quartiles. Practices have been assigned to one of four groups depending on the number of registered patients, as shown below.

	Number of registered patients	Number of practices in the quartile
Quartile 1	1 - 1723 patients	260 practices
Quartile 2	1724 – 3100 patients	257 practices
Quartile 3	3101 – 5380 patients	259 practices
Quartile 4	≥5381 patients	257 practices

You will see in the data tables throughout the report that there is a number for your practice, the quartile you belong to and the national data (all practices grouped together).

Sample Medical Centre is in Quartile 2

4. Cost data

This report includes cost data for the first time (Pages 6 – 7). This is to provide you with a general understanding of the highest cost medicines used each year in New Zealand and for patients in **your practice**.



If the prescribing from **your practice** is different compared to **other practices** in your quartile or nationally, this may be explained by a number of reasons, such as:

- Your demographics, e.g. a high proportion of children registered to your practice may explain a higher number of dispensings of asthma medicines
- The region you live in e.g. medicines to treat rheumatic fever in the far North of New Zealand will be higher than in the South
- Someone in your practice may specialise in a particular area of medicine that uses certain medicines more than others, e.g. dermatology and isotretinoin prescribing



Feedback

As this is the first year we have made these changes – we would like to know how useful you find them. We would also like to hear if you have any further suggestions for presenting and comparing annual prescribing and testing data. Email us at: **contact@bpac.org.nz**

Demographics of your patients

This section describes the demographic characteristics of the registered population of your practice, compared to the demographics of all registered patients in your assigned quartile (quartile data) and to the demographics of all registered patients in New Zealand (national data). The data in this section are taken from the fourth quarter 2013 enrolment registers provided to bpac^{nz} by the Ministry of Health.

The volume and cost of prescribing are influenced by the demography and morbidity of the population served, e.g. elderly patients have a greater need for medicines than younger adult patients. These differences or variations should be taken into account when comparing data either between practices in your quartile or nationally.



Use the data to determine if your practice demography varies greatly compared with practices in your quartile or nationally – this may help to explain any differences you see throughout your report

Sample Medical Centre

Quartile 2

Number of patients

Patients registered to your practice

1,889

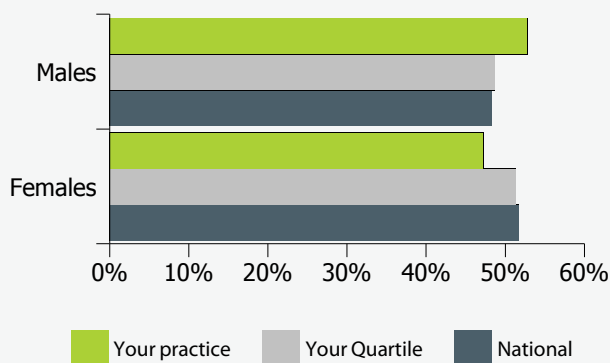
Mean number of registered patients per practice in your quartile

2,323

Mean number of registered patients per practice in New Zealand

4,133

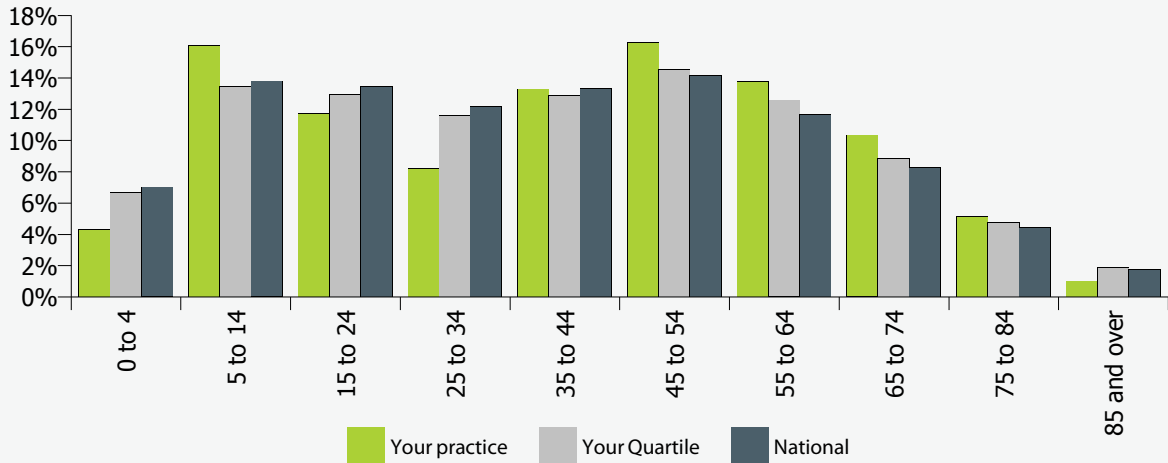
Gender



Demographics of your patients

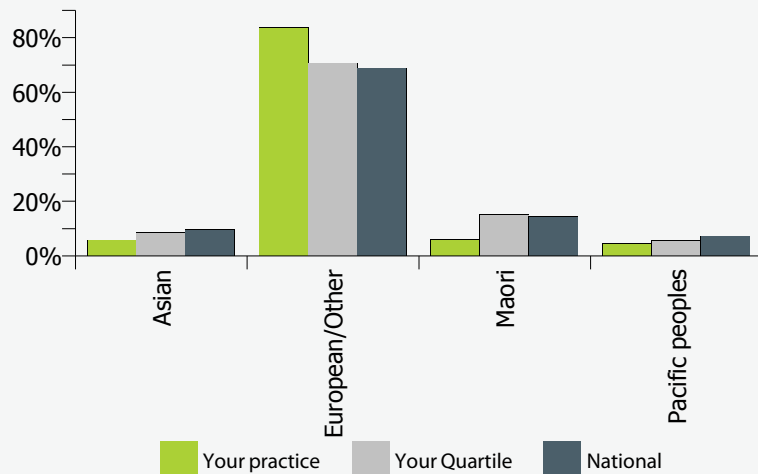
Age group

This is based on the recorded date of birth for each patient



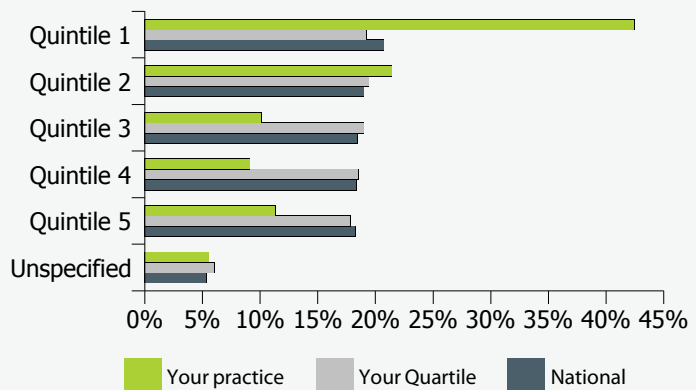
Ethnic group

This is based on the patient's self-identified ethnic group. A patient may specify up to three ethnic groups which are then prioritised: if any of the three ethnic groups is Māori or Pacific peoples, the patient is identified in this group.



Deprivation quintile

Deprivation quintile is a score representing the level of socio-economic deprivation of the area where the person resides. Quintile 1 is the least deprived and quintile 5 is the most deprived. Unspecified deprivation refers to an address that could not be geocoded.



Practice overview



Quick facts for Sample Medical Centre

Between July, 2013 and June, 2014

Summary of prescribing

	Your Practice	Your Quartile	National
Number of distinct medicines prescribed for your patients	389	726	752
Number of prescribers that prescribed for your patients	709		
Number of initial/stat items dispensed	18,034	22,292	38,832
Average initial/stat items per patient	9.5	9.6	9.3
Distinct patients that received a medicine	1,554	1,751	3,134
Percent of registered patients dispensed at least one medicine	82%	75%	75%
Percent of items that are in the national top 250 dispensed medicines	95%	94%	94%

Summary of laboratory testing

	Your Practice	Your Quartile	National
Number of laboratory tests	9,788	14,022	24,571
Average tests per patient	5.2	6.0	5.9
Percent of registered patients with at least one test in a community laboratory	57%	54%	53%
Percent of tests that are in the national top 75 requested tests	98%	97%	97%

Most used and highest cost medicines – Nationally

The table on the left below shows the top 20 highest volume medicines dispensed (initial/stat) nationally between July, 2013 and June, 2014. This table also shows the number of dispensings of these medicines per 1000 patients for your quartile.

The table on the right shows the top 20 highest cost[#] medicines dispensed nationally between July, 2013 and June, 2014. The table also shows the average cost of these medicines per practice for practices in your quartile.

Top 20 highest volume medicines	National	Your Quartile	Top 20 highest cost medicines	National	Your Quartile
- Nationally	Items per 1000 patients	Items per 1000 patients	- Nationally	Average medicine cost per practice	Average medicine cost per practice
1 Paracetamol	531.9	507.9	1 Dabigatran	\$25,736.36	\$15,849.36
2 Aspirin	300.9	326.3	2 Fluticasone with salmeterol	\$24,599.62	\$14,326.97
3 Omeprazole	277.5	290.0	3 Budesonide with eformoterol	\$19,550.88	\$11,058.22
4 Amoxicillin	249.9	235.7	4 Insulin glargine	\$15,127.45	\$9,042.61
5 Atorvastatin	225.7	238.0	5 Tiotropium bromide	\$12,371.95	\$7,806.59
6 Metoprolol succinate	222.4	235.9	6 Blood glucose diagnostic test strip	\$11,606.61	\$6,837.20
7 Ibuprofen	192.6	187.4	7 Risperidone	\$10,939.29	\$5,995.58
8 Simvastatin	191.0	209.5	8 Sodium valproate	\$9,340.51	\$5,606.17
9 Salbutamol	185.5	187.5	9 Venlafaxine	\$9,031.90	\$5,278.06
10 Cilazapril	161.3	169.0	10 Varenicline tartrate	\$8,290.10	\$4,942.57
11 Amoxicillin with clavulanic acid	158.2	161.3	11 Fluticasone	\$8,149.01	\$5,191.76
12 Cholecalciferol	156.0	174.9	12 Lamotrigine	\$8,109.41	\$4,770.11
13 Prednisone	132.3	133.5	13 Mesalazine	\$7,793.33	\$4,557.60
14 Zopiclone	120.2	120.7	14 Alendronate sodium with cholecalciferol	\$6,706.33	\$3,638.63
15 Metformin hydrochloride	118.7	121.7	15 Carvedilol	\$6,541.33	\$4,205.18
16 Levothyroxine	113.4	119.8	16 Ezetimibe	\$6,388.51	\$3,419.08
17 Loratadine	109.0	95.0	17 Salbutamol	\$6,365.74	\$3,628.08
18 Diclofenac sodium	106.9	107.3	18 Atorvastatin	\$5,528.79	\$3,167.01
19 Felodipine	104.7	115.6	19 Insulin aspart	\$5,492.00	\$3,212.23
20 Flucloxacillin	100.5	99.2	20 Olanzapine	\$5,183.76	\$3,164.03

Most used laboratory tests - Nationally

The table to the right shows the top 20 highest volume laboratory tests performed nationally between July, 2013 and June, 2014. This table also shows the number of tests per 1000 patients for practices in your quartile.

Top 20 Laboratory tests - Nationally	National	Your Quartile
	Tests per 1000 patients	Tests per 1000 patients
1 Complete blood count (CBC)	557.1	566.3
2 Creatinine, serum	513.6	522.8
3 Sodium & Potassium, serum	437.5	430.7
4 Glycated haemoglobin (HbA1c)	377.2	387.4
5 Liver function group	364.5	376.9
6 Lipid group test	322.7	341.1
7 Thyroid stimulating hormone, serum (TSH)	267.1	274.0
8 Ferritin, serum	251.8	259.0
9 C-reactive protein test	204.6	215.9
10 Plasma prothrombin ratio (INR)	177.7	185.3
11 Urine Culture	163.1	160.1
12 Folate plus vitamin B12, serum	131.8	137.5
13 Urate or uric acid, serum	118.0	125.5
14 Plasma glucose	112.0	113.5
15 Cervical Screening (NCSP)	101.9	102.3
16 Prostate Specific Antigen (PSA)	88.2	98.4
17 Swab, throat	84.2	68.8
18 Free thyroxine index or free T4	84.0	90.4
19 Microalbumin	80.0	80.5
20 Calcium, serum	76.5	84.7

In this report, cost is the standard price at which a medicine is supplied to wholesalers, exclusive of GST, dispensing fees, markup and rebates. Therefore the cost listed is not necessarily the actual cost of this medicine.

Most used and highest cost medicines – Your Practice

The table below shows the top 20 highest volume medicines dispensed (initial/stat) for your practice between July, 2013 and June, 2014 and the number of patients treated during the same time period. To enable comparisons, we have also provided the number of items per 1000 patients for your practice, your quartile and nationally of these medicines. These values will help you to gauge if your practice prescribes more or less of each medicine compared with other practices.

Top 20 highest volume medicines - Your Practice	Practice		Your Quartile	National
	Items	Items per 1000 patients	Items per 1000 patients	Items per 1000 patients
1 Paracetamol	1,205	637.9	507.9	531.9
2 Amoxicillin	830	439.4	235.7	249.9
3 Omeprazole	694	367.4	290.0	277.5
4 Aspirin	651	344.6	326.3	300.9
5 Amoxicillin with clavulanic acid	476	252.0	161.3	158.2
6 Simvastatin	435	230.3	209.5	191.0
7 Ibuprofen	425	225.0	187.4	192.6
8 Cilazapril	419	221.8	169.0	161.3
9 Diclofenac sodium	408	216.0	107.3	106.9
10 Atorvastatin	390	206.5	238.0	225.7
11 Salbutamol	374	198.0	187.5	185.5
12 Metoprolol succinate	347	183.7	235.9	222.4
13 Bendroflumethiazide [Bendrofluazide]	276	146.1	94.5	82.3
14 Prednisone	236	124.9	133.5	132.3
15 Felodipine	212	112.2	115.6	104.7
16 Metformin hydrochloride	205	108.5	121.7	118.7
17 Zopiclone	202	106.9	120.7	120.2
18 Paracetamol with codeine	191	101.1	80.6	76.0
19 Fluticasone propionate	188	99.5	67.8	68.7
20 Tramadol hydrochloride	185	97.9	91.4	86.5

The table below shows the top 20 highest cost medicines that your practice prescribed. To enable comparisons, we have also provided the average cost per practice for practices in your quartile and nationally.

Top 20 highest cost medicines - Your Practice	Practice	Your Quartile	National
	Medicine Cost	Average Medicine Cost per practice	Average Medicine Cost per practice
1 Budesonide with eformoterol	\$11,193.75	\$11,058.22	\$19,550.88
2 Blood glucose diagnostic test strip	\$7,951.49	\$6,837.20	\$11,606.61
3 Insulin glargine	\$7,547.40	\$9,042.61	\$15,127.45
4 Fluticasone with salmeterol	\$6,349.81	\$14,326.97	\$24,599.62
5 Mesalazine	\$5,301.34	\$4,557.60	\$7,793.33
6 Dabigatran	\$5,180.00	\$15,849.36	\$25,736.36
7 Risperidone	\$4,814.72	\$5,995.58	\$10,939.29
8 Insulin aspart	\$4,638.45	\$3,212.23	\$5,492.00
9 Alendronate sodium with cholecalciferol	\$4,385.36	\$3,638.63	\$6,706.33
10 Varenicline tartrate	\$4,226.46	\$4,942.57	\$8,290.10
11 Sodium valproate	\$4,005.24	\$5,606.17	\$9,340.51
12 Tiotropium bromide	\$3,640.00	\$7,806.59	\$12,371.95
13 Venlafaxine	\$3,177.86	\$5,278.06	\$9,031.90
14 Oxycodone hydrochloride	\$2,833.70	\$2,183.56	\$3,868.29
15 Omeprazole	\$2,768.99	\$2,846.90	\$4,823.81
16 Atorvastatin	\$2,594.75	\$3,167.01	\$5,528.79
17 Insulin isophane	\$2,554.48	\$1,995.51	\$3,625.10
18 Salbutamol	\$2,521.84	\$3,628.08	\$6,365.74
19 Methylphenidate hydrochloride extended-release	\$2,459.82	\$2,215.65	\$3,590.98
20 Nicotine (NRT products)	\$2,344.73	\$2,619.98	\$4,360.08

A summary of costs (Jul, 13 - Jun, 14)

	Average cost per item	Average cost per patient
Your Practice	\$14.78	\$141.09
Your Quartile	\$20.94	\$200.92
National	\$20.66	\$192.97

Most used laboratory tests – Your Practice

The table below shows the top 20 highest volume laboratory tests performed for your practice between July, 2013 and June, 2014. To enable comparisons, we have also provided the number of tests per 1000 patients for your practice, your quartile and nationally.

Top 20 laboratory tests - Your Practice	Practice		Your Quartile	National
	Number of tests	Tests per 1000 patients	Tests per 1000 patients	Tests per 1000 patients
1 Complete blood count (CBC)	946	500.8	566.3	557.1
2 Creatinine, serum	905	479.1	522.8	513.6
3 Glycated haemoglobin (HbA1c)	702	371.6	387.4	377.2
4 Liver function group	645	341.5	376.9	364.5
5 Lipid group test	591	312.9	341.1	322.7
6 Ferritin, serum	499	264.2	259.0	251.8
7 Sodium & Potassium, serum	469	248.3	430.7	437.5
8 Plasma prothrombin ratio (INR)	452	239.3	185.3	177.7
9 Thyroid stimulating hormone, serum (TSH)	391	207.0	274.0	267.1
10 C-reactive protein test	372	196.9	215.9	204.6
11 Urine Culture	321	169.9	160.1	163.1
12 Prostate Specific Antigen (PSA)	298	157.8	98.4	88.2
13 Folate plus vitamin B12, serum	292	154.6	137.5	131.8
14 Autoantibodies, other	187	99.0	45.8	45.2
15 Swab, throat	187	99.0	68.8	84.2
16 Cervical Screening (NCSP)	186	98.5	102.3	101.9
17 Urea, serum	151	79.9	82.3	75.5
18 Plasma glucose	130	68.8	113.5	112.0
19 Histology (per accession)	124	65.6	50.6	48.1
20 Skin tests, immediate hypersensitivity	115	60.9	27.7	31.1

Key reporting messages from the past 12 months

This section summarises the key messages and provides updated data for two prescribing reports that have been sent to practices over the past 12 months.



KEY MESSAGES – Oxycodone (bpac^{nz} report published Aug 2014)

- There is still a large number of patients prescribed oxycodone each year. Nationally between Jan-Mar 2014 >11,000 patients received a prescription for oxycodone (Figure 1).
- Oxycodone is a second-line strong opioid analgesic for use when morphine is not tolerated
- Strong opioids should be used at the lowest effective dose for the shortest possible time, and stepped down when pain resolves

Key points for reducing the use of oxycodone are highlighted in the BPJ, issue 62, as part of the **2014 oxycodone series**

See Page 17 for **your practice's data** on the use of morphine and oxycodone

For further information see: Oxycodone update report, August, 2014 or the oxycodone series in the Best Practice Journal, Issues 61-64, 2014. Available from www.bpac.org.nz

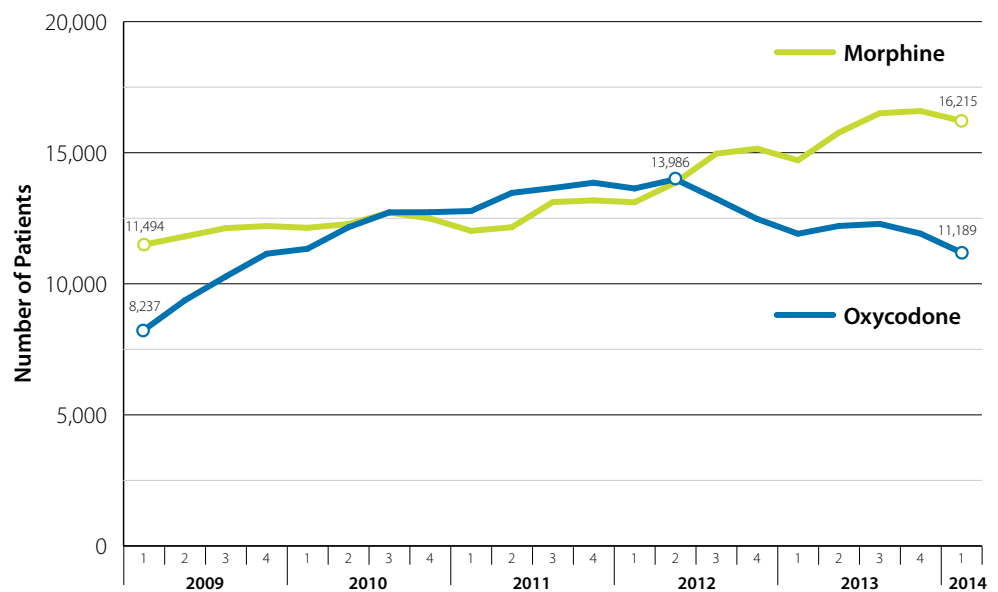


Figure 1: Number of patients dispensed oxycodone and morphine in each quarter for years 2009–2014



For a clinical audit on appropriate prescribing of oxycodone see: www.bpac.org.nz/Audits/Oxycodone.aspx



KEY MESSAGES – Amoxicillin clavulanate (bpac^{nz} report published Aug 2013)

- Amoxicillin clavulanate remains frequently used in New Zealand general practice. While it is an important and effective medicine, its use must be reserved for specific indications in order to reduce the rate of antimicrobial resistant infections
- Amoxicillin clavulanate is a broader spectrum antibiotic than amoxicillin and is best reserved for clinical situations where cover for potential polymicrobial infections is required
- There are only a few indications where amoxicillin clavulanate is a first-line treatment, e.g. diabetic foot infections
- bpac^{nz} analysis has shown that although the number of prescriptions for amoxicillin clavulanate dispensed is decreasing (Figure 2). However amoxicillin clavulanate still accounted for 19% of all antibiotics used nationally between July, 2013 - June, 2014. We would expect this percentage to be less

See Page 16 for **your practice's data** on the use of amoxicillin and amoxicillin clavulanate

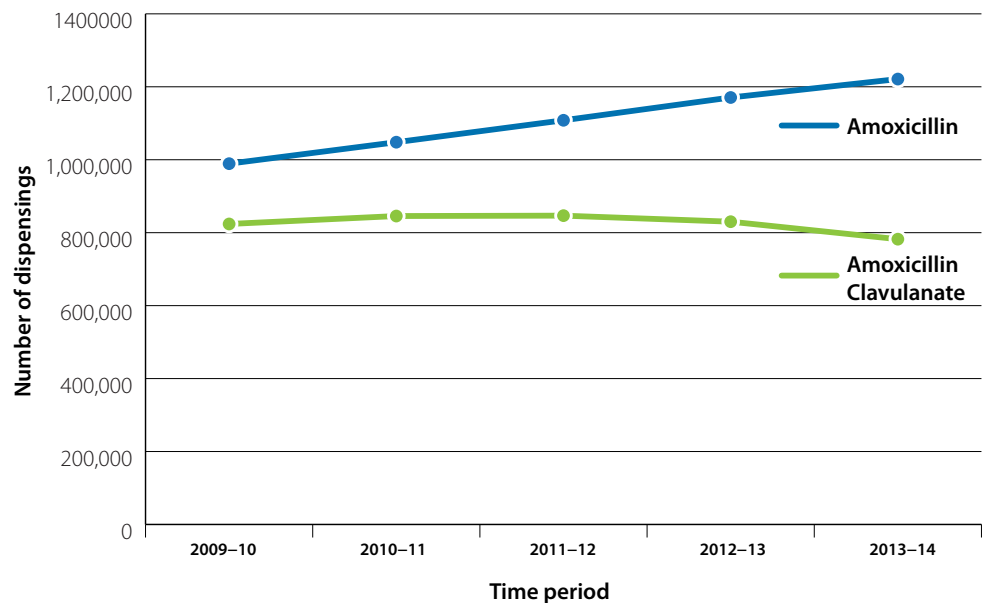


Figure 2: The use of amoxicillin and amoxicillin clavulanate nationally between July, 2009 and June, 2014

For further information see: the bpac^{nz} Antibiotics Guide or the Appropriate use of amoxicillin clavulanate report, Aug, 2013. Available from www.bpac.org.nz

See more online at www.bpac.org.nz

Key laboratory reporting messages from the past 12 months

This section summarises the key messages and provides updated data for two laboratory reports that have been sent to practices over the past 12 months.



KEY MESSAGES – Cervical Screening (bpac^{nz} report published Oct 2013)

- There are approximately 180 women diagnosed with cervical cancer in New Zealand each year. Having regular cervical smears can reduce a woman's risk of developing cervical cancer by 90%
- Cervical screening is recommended for most women aged between 20 and 70 years
- New cervical screening targets have been introduced with the implementation of the Integrated Performance and Incentive Framework (IPIF). All primary care health organisations will be expected to meet the national target of 80% by June 2015

See Page 20 for **your practice's data** on cervical screening

75.2% of women between 20 and 70 years had a cervical screening test between July, 2011– June, 2014

For further information see the cervical screening report, Oct, 2013 or Upfront: The Integrated Performance and Incentive Framework (IPIF): What has changed and how does it affect primary care? BPJ, issue 62, 2014. Available from www.bpac.org.nz

KEY MESSAGES – Iron deficiency (bpac^{nz} report published Dec 2013)

- Microcytic anaemia is defined as a mean cell volume < 80 fL and haemoglobin levels below what would be normal for a person's age and sex. The most frequent cause of microcytic anaemia in New Zealand is iron deficiency
- The cause of iron deficiency anaemia always needs to be investigated. Some of the primary causes are: obstetric/gynaecological (e.g. menorrhagia or pregnancy), gastrointestinal bleeding, malabsorption (e.g. coeliac disease), medicines that cause gastric erosions/ulcerations and those that interfere with coagulation/platelet function, dietary deficiency (e.g. vegans), or other reasons (e.g. blood donation, trauma, surgery)
- Serum ferritin alone is a highly sensitive test of iron deficiency in patients with otherwise good health. Iron studies (serum iron, iron binding capacity and serum transferrin) should not be ordered as initial first-line tests

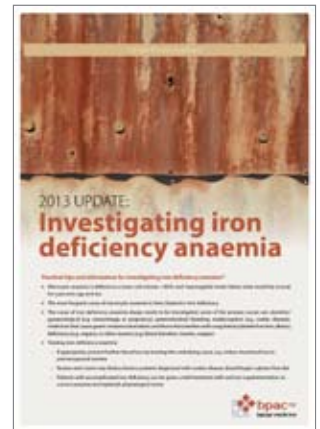
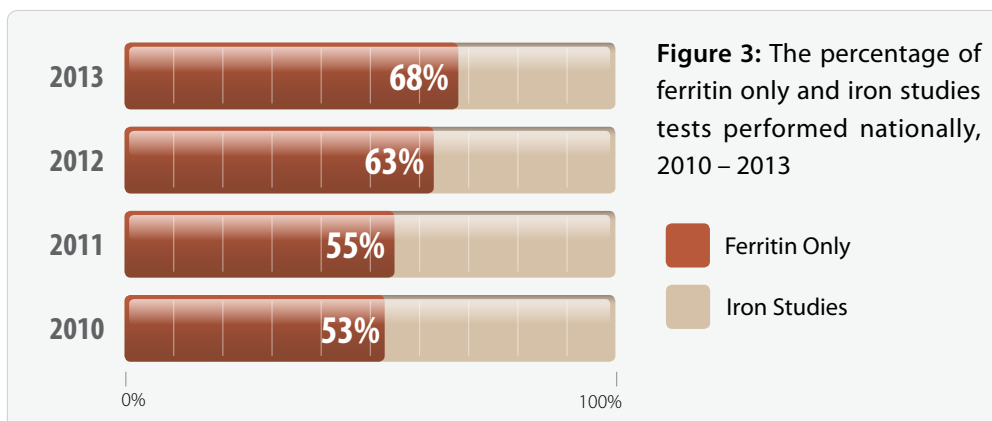


Figure 3 shows the breakdown of anaemia testing as a percentage of ferritin only and iron studies tests that were performed nationally between 2010 and 2013.



See Page 21 for **your practice's data** on testing for iron deficiency

For further information see the Investigating iron deficiency anaemia report, Dec, 2013 or Anaemia on full blood count: investigating beyond the pale, Best Tests, September, 2014. Available from www.bpac.org.nz

Top 250 – Dispensed subsidised medicines

In this section, the data shown for your practice is the number of initial or stat prescription items dispensed and the number of items per 1000 registered patients. For comparison;

- The quartile data shows the average number of items per practice for practices in your quartile and the number of items per 1000 registered patients in your quartile.
- The national data shows the average number of items per practice and the number of items per 1000 registered patients in New Zealand.

Alimentary Tract and Metabolism

	Items (Stat or Initial)	Items per 1000 patients	Average Items (Stat or Initial)	Items per 1000 patients	Average Items (Stat or Initial)	Items per 1000 patients
Antidiarrhoeals	Practice		Your Quartile		National	
Loperamide hydrochloride	67	35.5	63.3	27.2	107.8	26.1
Mesalazine	26	13.8	20.4	8.8	35.4	8.6
Sulphasalazine	26	13.8	11.8	5.1	19.6	4.8
Antispasmodics and Other Agents Altering Gut Motility	Practice		Your Quartile		National	
Hyoscine N-butylbromide	23	12.2	40.4	17.4	72.7	17.6
Antiulcerants	Practice		Your Quartile		National	
Lansoprazole	24	12.7	31.4	13.5	51.2	12.4
Omeprazole	694	367.4	674.0	290.0	1,146.7	277.5
Pantoprazole	51	27.0	103.1	44.4	172.1	41.6
Ranitidine	29	15.4	55.8	24.0	89.7	21.7
Diabetes	Practice		Your Quartile		National	
Gliclazide	19	10.1	79.8	34.4	133.8	32.4
Glipizide	60	31.8	36.5	15.7	68.1	16.5
Insulin aspart	29	15.4	30.2	13.0	52.1	12.6
Insulin glargine	39	20.6	50.7	21.8	85.9	20.8
Insulin isophane	35	18.5	31.3	13.5	56.9	13.8
Insulin isophane with insulin neutral	13	6.9	19.6	8.4	33.6	8.1
Insulin lispro	15	7.9	13.4	5.8	22.1	5.4
Insulin lispro with insulin lispro protamine	0	0.0			21.5	5.2
Metformin hydrochloride	205	108.5	282.8	121.7	490.4	118.7
Diabetes Management	Practice		Your Quartile		National	
Blood glucose diagnostic test strip	110	58.2	173.9	74.8	297.8	72.1
Insulin pen needles	32	16.9	48.9	21.0	85.3	20.6
Laxatives	Practice		Your Quartile		National	
Bisacodyl	13	6.9	13.6	5.9	21.5	5.2
Docusate sodium with sennosides	101	53.5	190.4	81.9	333.0	80.6
Ispaghula (psyllium) husk	17	9.0	43.1	18.5	70.1	17.0
Lactulose	89	47.1	101.5	43.7	187.7	45.4
Macrogol 3350 with potassium chloride, sodium bicarbonate and sodium chloride	26	13.8	27.3	11.8	51.6	12.5
Sodium citrate with sodium lauryl sulphoacetate	21	11.1	12.0	5.1	22.3	5.4
Local preparations for Anal and Rectal Disorders	Practice		Your Quartile		National	
Fluocortolone caproate with fluocortolone pivalate and cinchocaine	27	14.3	48.5	20.9	87.0	21.0
Hydrocortisone with cinchocaine	1	0.5	15.9	6.8	29.0	7.0
Minerals	Practice		Your Quartile		National	
Calcium carbonate	40	21.2	71.0	30.6	112.5	27.2
Ferrous fumarate	44	23.3	78.0	33.6	146.1	35.4
Ferrous sulphate	5	2.6	32.6	14.0	56.5	13.7
Potassium iodate	40	21.2	39.1	16.8	78.2	18.9

Alimentary Tract and Metabolism

	Items (Stat or Initial)	Items per 1000 patients	Average Items (Stat or Initial)	Items per 1000 patients	Average Items (Stat or Initial)	Items per 1000 patients
Mouth and Throat	Practice		Your Quartile		National	
Nystatin	16	8.5	20.3	8.7	35.1	8.5
Vitamins	Practice		Your Quartile		National	
Ascorbic acid	2	1.1	16.1	6.9	30.2	7.3
Calcitriol	9	4.8	13.8	5.9	22.0	5.3
Cholecalciferol	141	74.6	406.5	174.9	644.6	156.0
Hydroxocobalamin	36	19.1	53.4	23.0	81.7	19.8
Thiamine hydrochloride	1	0.5	22.9	9.8	35.0	8.5
Vitamin B complex	1	0.5	11.5	5.0	24.1	5.8
Vitamins	38	20.1	96.2	41.4	151.2	36.6

Blood and Blood Forming Organs

	Items (Stat or Initial)	Items per 1000 patients	Average Items (Stat or Initial)	Items per 1000 patients	Average Items (Stat or Initial)	Items per 1000 patients
Antianaemics	Practice		Your Quartile		National	
Folic acid	73	38.6	102.2	44.0	179.0	43.3
Antifibrinolytics, Haemostatics and Local Sclerosants	Practice		Your Quartile		National	
Tranexamic acid	10	5.3	16.1	6.9	30.1	7.3
Antithrombotic Agents	Practice		Your Quartile		National	
Aspirin	651	344.6	758.2	326.3	1,243.4	300.9
Clopidogrel	21	11.1	57.0	24.5	96.0	23.2
Dabigatran	14	7.4	43.2	18.6	69.8	16.9
Dipyridamole	52	27.5	27.5	11.8	42.1	10.2
Warfarin sodium	163	86.3	144.2	62.0	245.1	59.3
Fluids and Electrolytes	Practice		Your Quartile		National	
Compound electrolytes	23	12.2	20.6	8.9	44.1	10.7
Dextrose with electrolytes	12	6.4	24.2	10.4	52.6	12.7
Potassium chloride	26	13.8	37.4	16.1	60.3	14.6

Cardiovascular System

	Items (Stat or Initial)	Items per 1000 patients	Average Items (Stat or Initial)	Items per 1000 patients	Average Items (Stat or Initial)	Items per 1000 patients
Agents Affecting the Renin-Angiotensin System	Practice		Your Quartile		National	
Candesartan cilexetil	94	49.8	140.1	60.3	236.9	57.3
Cilazapril	419	221.8	392.8	169.0	666.7	161.3
Cilazapril with hydrochlorothiazide	138	73.1	140.8	60.6	241.1	58.3
Enalapril maleate	8	4.2	54.6	23.5	92.9	22.5
Lisinopril	19	10.1	24.1	10.4	41.6	10.1
Losartan potassium	20	10.6	70.7	30.4	116.8	28.3
Losartan potassium with hydrochlorothiazide	8	4.2	14.5	6.3	24.6	6.0
Quinapril	59	31.2	229.0	98.5	376.5	91.1
Quinapril with hydrochlorothiazide	40	21.2	63.8	27.5	108.9	26.4
Alpha Adrenoceptor Blockers	Practice		Your Quartile		National	
Doxazosin	81	42.9	129.9	55.9	206.0	49.8
Terazosin	6	3.2	47.6	20.5	76.7	18.6
Antiarrhythmics	Practice		Your Quartile		National	
Amiodarone hydrochloride	11	5.8	13.5	5.8	21.6	5.2
Digoxin	12	6.4	57.3	24.6	92.4	22.4

Cardiovascular System

	Items (Stat or Initial)	Items per 1000 patients	Average Items (Stat or Initial)	Items per 1000 patients	Average Items (Stat or Initial)	Items per 1000 patients
Beta Adrenoceptor Blockers	Practice		Your Quartile		National	
Atenolol	53	28.1	43.6	18.7	76.9	18.6
Bisoprolol	0	0.0			38.3	9.3
Carvedilol	6	3.2	33.6	14.5	52.7	12.8
Celiprolol	9	4.8	19.6	8.4	27.3	6.6
Metoprolol succinate	347	183.7	548.1	235.9	919.1	222.4
Nadolol	6	3.2	14.1	6.1	22.2	5.4
Propranolol	11	5.8	20.9	9.0	36.3	8.8
Sotalol	24	12.7	16.3	7.0	26.7	6.5
Calcium Channel Blockers	Practice		Your Quartile		National	
Amlodipine	46	24.4	146.1	62.9	247.5	59.9
Diltiazem hydrochloride	72	38.1	127.7	55.0	221.7	53.6
Felodipine	212	112.2	268.5	115.6	432.8	104.7
Verapamil hydrochloride	12	6.4	20.3	8.7	30.9	7.5
Diuretics	Practice		Your Quartile		National	
Bendroflumethiazide [Bendrofluazide]	276	146.1	219.6	94.5	340.2	82.3
Furosemide [Frusemide]	47	24.9	221.0	95.1	367.1	88.8
Spironolactone	19	10.1	59.8	25.8	87.3	21.1
Lipid-Modifying Agents	Practice		Your Quartile		National	
Atorvastatin	390	206.5	553.1	238.0	932.6	225.7
Bezafibrate	11	5.8	39.7	17.1	58.4	14.1
Ezetimibe	18	9.5	37.0	15.9	68.5	16.6
Pravastatin	21	11.1	19.1	8.2	31.7	7.7
Simvastatin	435	230.3	486.8	209.5	789.1	191.0
Nitrates	Practice		Your Quartile		National	
Glyceryl trinitrate	28	14.8	53.2	22.9	85.1	20.6
Isosorbide mononitrate	25	13.2	78.0	33.6	124.2	30.1

Dermatologicals

	Items (Stat or Initial)	Items per 1000 patients	Average Items (Stat or Initial)	Items per 1000 patients	Average Items (Stat or Initial)	Items per 1000 patients
Antiacne Preparations	Practice		Your Quartile		National	
Adapalene	37	19.6	11.5	5.0	24.1	5.8
Isotretinoin	7	3.7	13.1	5.6	24.9	6.0
Antibacterials Topical	Practice		Your Quartile		National	
Fusidic acid	164	86.8	105.8	45.5	200.5	48.5
Hydrogen peroxide	0	0.0			22.1	5.4
Mupirocin	26	13.8	45.5	19.6	79.5	19.2
Antifungals Topical	Practice		Your Quartile		National	
Ciclopirox olamine	3	1.6	11.9	5.1	20.8	5.0
Clotrimazole	18	9.5	31.9	13.7	61.3	14.8
Miconazole nitrate	12	6.4	34.4	14.8	61.6	14.9
Antipruritic Preparations	Practice		Your Quartile		National	
Calamine	9	4.8	12.9	5.6	23.7	5.7
Barrier Creams and Emollients	Practice		Your Quartile		National	
Aqueous cream	53	28.1	64.4	27.7	118.7	28.7
Cetomacrogol	104	55.1	48.7	20.9	100.0	24.2
Emulsifying ointment	27	14.3	33.8	14.6	59.5	14.4
Oil in water emulsion	20	10.6	68.4	29.4	130.2	31.5

Dermatologicals

	Items (Stat or Initial)	Items per 1000 patients	Average Items (Stat or Initial)	Items per 1000 patients	Average Items (Stat or Initial)	Items per 1000 patients
Barrier Creams and Emollients	Practice		Your Quartile		National	
Urea	61	32.3	31.5	13.5	56.0	13.5
Zinc and castor oil	3	1.6	11.3	4.8	22.3	5.4
Corticosteroids Topical	Practice		Your Quartile		National	
Betamethasone valerate	16	8.5	46.9	20.2	89.1	21.6
Clobetasol propionate	57	30.2	56.6	24.4	97.3	23.6
Hydrocortisone	50	26.5	82.8	35.6	158.6	38.4
Hydrocortisone butyrate	112	59.3	110.9	47.7	206.0	49.8
Hydrocortisone with miconazole	78	41.3	81.6	35.1	155.5	37.6
Hydrocortisone with natamycin and neomycin	175	92.6	76.8	33.0	148.6	36.0
Hydrocortisone with wool fat and mineral oil	5	2.6	20.3	8.7	31.4	7.6
Methylprednisolone aceponate	5	2.6	15.5	6.7	24.4	5.9
Mometasone furoate	66	34.9	46.2	19.9	81.3	19.7
Other Skin Preparations	Practice		Your Quartile		National	
Fluorouracil sodium	39	20.6	27.6	11.9	47.0	11.4
Parasiticial Preparations	Practice		Your Quartile		National	
Permethrin	8	4.2	28.9	12.4	51.6	12.5
Psoriasis and Eczema Preparations	Practice		Your Quartile		National	
Betamethasone dipropionate with calcipotriol	11	5.8	14.3	6.2	25.1	6.1
Tar with triethanolamine lauryl sulphate and fluorescein	9	4.8	22.4	9.6	43.7	10.6
Scalp Preparations	Practice		Your Quartile		National	
Hydrocortisone butyrate	10	5.3	13.1	5.6	22.3	5.4
Ketoconazole	13	6.9	23.4	10.0	41.5	10.0

Genito-Urinary System

	Items (Stat or Initial)	Items per 1000 patients	Average Items (Stat or Initial)	Items per 1000 patients	Average Items (Stat or Initial)	Items per 1000 patients
Antiandrogen Oral Contraceptives	Practice		Your Quartile		National	
Cyproterone acetate with ethinylestradiol	26	13.8	32.5	14.0	64.1	15.5
Contraceptives - Hormonal	Practice		Your Quartile		National	
Ethinylestradiol with levonorgestrel	102	54.0	111.2	47.9	206.4	49.9
Ethinylestradiol with norethisterone	12	6.4	23.7	10.2	44.4	10.8
Norethisterone	22	11.6	34.4	14.8	66.4	16.1
Contraceptives - Non-hormonal	Practice		Your Quartile		National	
Condoms	20	10.6	24.5	10.5	47.0	11.4
Gynaecological Anti-infectives	Practice		Your Quartile		National	
Clotrimazole	35	18.5	50.5	21.7	96.4	23.3
Myometrial and Vaginal Hormone Preparations	Practice		Your Quartile		National	
Oestril	40	21.2	63.2	27.2	105.4	25.5
Urinary Agents	Practice		Your Quartile		National	
Finasteride	8	4.2	18.5	8.0	29.8	7.2
Oxybutynin	34	18.0	38.7	16.7	58.4	14.1
Sodium citro-tartrate	9	4.8	23.6	10.2	43.8	10.6
Solifenacin succinate	10	5.3	17.9	7.7	31.8	7.7

Hormone Preparations - Systemic Excluding Contraceptive Hormones

	Items (Stat or Initial)	Items per 1000 patients	Average Items (Stat or Initial)	Items per 1000 patients	Average Items (Stat or Initial)	Items per 1000 patients
Corticosteroids and Related Agents for Systemic Use	Practice		Your Quartile		National	
Dexamethasone	14	7.4	17.0	7.3	28.3	6.9
Prednisolone sodium phosphate	61	32.3	50.0	21.5	99.4	24.0
Prednisone	236	124.9	310.3	133.5	546.8	132.3
Hormone Replacement Therapy - Systemic	Practice		Your Quartile		National	
Medroxyprogesterone acetate	13	6.9	13.8	5.9	26.6	6.4
Oestradiol	1	0.5	12.6	5.4	21.0	5.1
Oestradiol valerate	0	0.0			21.9	5.3
Oestradiol with norethisterone	15	7.9	13.3	5.7	20.9	5.1
Thyroid and Antithyroid Agents	Practice		Your Quartile		National	
Carbimazole	6	3.2	13.7	5.9	23.7	5.7
Levothyroxine	162	85.8	278.5	119.8	468.5	113.4

Infections - Agents for Systemic Use

	Items (Stat or Initial)	Items per 1000 patients	Average Items (Stat or Initial)	Items per 1000 patients	Average Items (Stat or Initial)	Items per 1000 patients
Antibacterials	Practice		Your Quartile		National	
Amoxicillin	830	439.4	547.8	235.7	1,032.7	249.9
Amoxicillin with clavulanic acid	476	252.0	374.9	161.3	653.9	158.2
Azithromycin	8	4.2	17.8	7.6	33.2	8.0
Cefaclor monohydrate	51	27.0	101.8	43.8	173.2	41.9
Cefalexin monohydrate	5	2.6	24.6	10.6	48.1	11.6
Ciprofloxacin	27	14.3	46.2	19.9	78.3	18.9
Co-trimoxazole	104	55.1	83.0	35.7	143.2	34.7
Doxycycline	132	69.9	144.3	62.1	243.0	58.8
Erythromycin ethyl succinate	92	48.7	101.7	43.7	187.6	45.4
Flucloxacillin	134	70.9	230.5	99.2	415.2	100.5
Phenoxymethylpenicillin (Penicillin V)	10	5.3	48.1	20.7	87.3	21.1
Roxithromycin	137	72.5	120.5	51.8	202.7	49.0
Trimethoprim	24	12.7	88.5	38.1	156.2	37.8
Antifungals	Practice		Your Quartile		National	
Fluconazole	2	1.1	16.1	6.9	31.7	7.7
Terbinafine	16	8.5	18.8	8.1	30.3	7.3
Antitrichomonal Agents	Practice		Your Quartile		National	
Metronidazole	45	23.8	58.4	25.1	107.3	26.0
Antivirals	Practice		Your Quartile		National	
Aciclovir	42	22.2	50.3	21.6	89.2	21.6
Urinary Tract Infections	Practice		Your Quartile		National	
Nitrofurantoin	8	4.2	39.9	17.2	70.8	17.1
Norfloxacin	90	47.6	37.8	16.3	65.4	15.8

Musculoskeletal System

	Items (Stat or Initial)	Items per 1000 patients	Average Items (Stat or Initial)	Items per 1000 patients	Average Items (Stat or Initial)	Items per 1000 patients
Antirheumatoid Agents	Practice		Your Quartile		National	
Hydroxychloroquine	16	8.5	16.5	7.1	29.3	7.1
Drugs Affecting Bone Metabolism	Practice		Your Quartile		National	
Alendronate sodium	1	0.5	17.9	7.7	26.8	6.5
Alendronate sodium with cholecalciferol	69	36.5	57.4	24.7	109.0	26.4

Musculoskeletal System

	Items (Stat or Initial)	Items per 1000 patients	Average Items (Stat or Initial)	Items per 1000 patients	Average Items (Stat or Initial)	Items per 1000 patients
Hyperuricaemia and Antigout	Practice		Your Quartile		National	
Allopurinol	155	82.1	189.4	81.5	323.0	78.2
Colchicine	7	3.7	29.9	12.9	52.0	12.6
Muscle Relaxants	Practice		Your Quartile		National	
Orphenadrine citrate	17	9.0	31.6	13.6	52.2	12.6
Non-Steroidal Anti-Inflammatory Drugs	Practice		Your Quartile		National	
Diclofenac sodium	408	216.0	249.3	107.3	442.0	106.9
Ibuprofen	425	225.0	435.6	187.4	796.1	192.6
Naproxen	74	39.2	115.0	49.5	196.4	47.5
Tenoxicam	9	4.8	21.0	9.1	24.8	6.0

Nervous System

	Items (Stat or Initial)	Items per 1000 patients	Average Items (Stat or Initial)	Items per 1000 patients	Average Items (Stat or Initial)	Items per 1000 patients
Agents for Parkinsonism and Related Disorders	Practice		Your Quartile		National	
Levodopa with carbidopa	28	14.8	20.7	8.9	36.7	8.9
Analgesics	Practice		Your Quartile		National	
Aspirin	10	5.3	18.0	7.8	31.5	7.6
Codeine phosphate	92	48.7	225.9	97.2	398.1	96.3
Dihydrocodeine tartrate	18	9.5	24.1	10.4	36.0	8.7
Fentanyl	11	5.8	18.8	8.1	33.6	8.1
Methadone hydrochloride	7	3.7	56.1	24.1	91.7	22.2
Morphine hydrochloride	10	5.3	16.9	7.3	27.3	6.6
Morphine sulphate	76	40.2	83.4	35.9	151.3	36.6
Oxycodone hydrochloride	150	79.4	79.5	34.2	140.6	34.0
Paracetamol	1,205	637.9	1,180.2	507.9	2,198.3	531.9
Paracetamol with codeine	191	101.1	187.4	80.6	314.0	76.0
Tramadol hydrochloride	185	97.9	212.3	91.4	357.4	86.5
Antidepressants	Practice		Your Quartile		National	
Amitriptyline	113	59.8	143.8	61.9	237.8	57.5
Citalopram hydrobromide	143	75.7	188.1	81.0	341.5	82.6
Dothiepin hydrochloride	4	2.1	18.5	8.0	30.0	7.3
Doxepin hydrochloride	8	4.2	18.7	8.0	27.9	6.8
Escitalopram	5	2.6	40.5	17.4	71.1	17.2
Fluoxetine hydrochloride	175	92.6	138.8	59.7	235.8	57.1
Mirtazapine	4	2.1	16.9	7.3	29.4	7.1
Nortriptyline hydrochloride	44	23.3	68.9	29.6	130.7	31.6
Paroxetine hydrochloride	71	37.6	69.0	29.7	120.0	29.0
Sertraline	3	1.6	25.6	11.0	45.4	11.0
Venlafaxine	61	32.3	81.8	35.2	141.6	34.3
Antiepilepsy Drugs	Practice		Your Quartile		National	
Carbamazepine	44	23.3	34.2	14.7	56.2	13.6
Gabapentin	48	25.4	49.3	21.2	83.6	20.2
Lamotrigine	9	4.8	24.9	10.7	42.7	10.3
Phenytoin sodium	8	4.2	18.9	8.1	29.5	7.1
Sodium valproate	43	22.8	65.0	28.0	109.5	26.5
Topiramate	2	1.1	11.8	5.1	19.7	4.8

Nervous System

	Items (Stat or Initial)	Items per 1000 patients	Average Items (Stat or Initial)	Items per 1000 patients	Average Items (Stat or Initial)	Items per 1000 patients
Antimigraine Preparations	Practice		Your Quartile		National	
Rizatriptan	26	13.8	25.8	11.1	46.0	11.1
Sumatriptan	33	17.5	23.7	10.2	39.4	9.5
Antinausea and Vertigo Agents	Practice		Your Quartile		National	
Cyclizine hydrochloride	4	2.1	14.0	6.0	24.3	5.9
Domperidone	25	13.2	37.7	16.2	71.0	17.2
Metoclopramide hydrochloride	59	31.2	59.4	25.5	104.6	25.3
Ondansetron	53	28.1	54.4	23.4	107.9	26.1
Prochlorperazine	16	8.5	53.3	23.0	86.9	21.0
Antipsychotics	Practice		Your Quartile		National	
Clozapine	19	10.1	20.3	8.8	36.0	8.7
Haloperidol	9	4.8	16.7	7.2	25.6	6.2
Lithium carbonate	11	5.8	18.8	8.1	30.5	7.4
Olanzapine	17	9.0	42.7	18.4	69.1	16.7
Quetiapine	12	6.4	101.0	43.5	173.2	41.9
Risperidone	29	15.4	46.9	20.2	79.6	19.3
Anxiolytics	Practice		Your Quartile		National	
Clonazepam	9	4.8	46.9	20.2	80.7	19.5
Diazepam	27	14.3	62.1	26.7	105.9	25.6
Lorazepam	153	81.0	72.7	31.3	127.4	30.8
Sedatives and Hypnotics	Practice		Your Quartile		National	
Temazepam	34	18.0	37.8	16.3	62.2	15.1
Triazolam	156	82.6	46.0	19.8	70.2	17.0
Zopiclone	202	106.9	280.5	120.7	496.7	120.2
Stimulants/ADHD Treatments	Practice		Your Quartile		National	
Methylphenidate hydrochloride	32	16.9	46.5	20.0	81.8	19.8
Methylphenidate hydrochloride extended-release	37	19.6	33.0	14.2	55.3	13.4
Treatments for Dementia	Practice		Your Quartile		National	
Donepezil hydrochloride	6	3.2	15.2	6.5	29.6	7.2
Treatments for Substance Dependence	Practice		Your Quartile		National	
Bupropion hydrochloride	2	1.1	11.4	4.9	19.6	4.8
Nicotine (NRT products)	74	39.2	79.7	34.3	135.5	32.8
Varenicline tartrate	30	15.9	37.5	16.2	62.9	15.2

Oncology Agents and Immunosuppressants

	Items (Stat or Initial)	Items per 1000 patients	Average Items (Stat or Initial)	Items per 1000 patients	Average Items (Stat or Initial)	Items per 1000 patients
Chemotherapeutic Agents	Practice		Your Quartile		National	
Methotrexate	28	14.8	42.3	18.2	73.0	17.7
Endocrine Therapy	Practice		Your Quartile		National	
Tamoxifen citrate	3	1.6	12.2	5.2	20.4	4.9
Immunosuppressants	Practice		Your Quartile		National	
Azathioprine	16	8.5	13.2	5.7	21.8	5.3

Respiratory System and Allergies

	Items (Stat or Initial)	Items per 1000 patients	Average Items (Stat or Initial)	Items per 1000 patients	Average Items (Stat or Initial)	Items per 1000 patients
Antihistamines	Practice		Your Quartile		National	
Cetirizine hydrochloride	182	96.3	183.5	79.0	330.1	79.9

Respiratory System and Allergies

	Items (Stat or Initial)	Items per 1000 patients	Average Items (Stat or Initial)	Items per 1000 patients	Average Items (Stat or Initial)	Items per 1000 patients
Antihistamines	Practice		Your Quartile		National	
Loratadine	133	70.4	220.7	95.0	450.4	109.0
Promethazine hydrochloride	18	9.5	49.2	21.2	84.1	20.3
Beta-Adrenoceptor Agonists	Practice		Your Quartile		National	
Salbutamol	374	198.0	435.8	187.5	766.6	185.5
Terbutaline sulphate	24	12.7	25.7	11.1	38.0	9.2
Inhaled Anticholinergic Agents	Practice		Your Quartile		National	
Ipratropium bromide	5	2.6	19.8	8.5	30.8	7.5
Salbutamol with ipratropium bromide	20	10.6	53.5	23.0	76.3	18.5
Tiotropium bromide	19	10.1	43.2	18.6	68.3	16.5
Inhaled Corticosteroids	Practice		Your Quartile		National	
Beclomethasone dipropionate	5	2.6	17.7	7.6	28.3	6.8
Budesonide	11	5.8	21.3	9.2	32.9	8.0
Fluticasone	88	46.6	187.9	80.9	311.8	75.4
Inhaled Long-acting Beta-adrenoceptor Agonists	Practice		Your Quartile		National	
Budesonide with eformoterol	91	48.2	78.4	33.7	138.1	33.4
Fluticasone with salmeterol	61	32.3	127.6	54.9	219.7	53.2
Salmeterol	2	1.1	21.7	9.3	30.1	7.3
Nasal Preparations	Practice		Your Quartile		National	
Beclomethasone dipropionate	11	5.8	40.2	17.3	69.3	16.8
Budesonide	35	18.5	33.5	14.4	61.5	14.9
Fluticasone propionate	188	99.5	157.6	67.8	284.1	68.7
Ipratropium bromide	8	4.2	13.9	6.0	22.2	5.4

Sensory Organs

	Items (Stat or Initial)	Items per 1000 patients	Average Items (Stat or Initial)	Items per 1000 patients	Average Items (Stat or Initial)	Items per 1000 patients
Ear/Eye Preparations	Practice		Your Quartile		National	
Dexamethasone with framycetin and gramicidin	20	10.6	24.3	10.4	43.3	10.5
Ear Preparations	Practice		Your Quartile		National	
Flumetasone pivalate	53	28.1	25.1	10.8	43.2	10.5
Triamcinolone acetonide with gramicidin, neomycin and nystatin	2	1.1	14.8	6.4	26.4	6.4
Eye Preparations	Practice		Your Quartile		National	
Bimatoprost	10	5.3	12.6	5.4	22.8	5.5
Chloramphenicol	157	83.1	119.6	51.5	223.1	54.0
Fusidic acid	30	15.9	32.3	13.9	54.9	13.3
Hypromellose with Dextran	35	18.5	31.6	13.6	60.3	14.6
Latanoprost	41	21.7	46.3	19.9	72.0	17.4
Levocabastine	22	11.6	12.7	5.5	22.4	5.4
Prednisolone acetate	19	10.1	21.9	9.4	38.2	9.2
Sodium cromoglycate	3	1.6	16.0	6.9	27.1	6.6
Timolol	16	8.5	17.8	7.6	26.7	6.5

Top 75 – Laboratory tests in community labs

In this section, the data shown for your practice is the number of tests performed and the number of tests per 1000 registered patients. For comparison;

- The quartile data shows the average number of tests performed per practice for practices in your quartile and the number of tests per 1000 registered patients in your quartile.
- The national data shows the average number of tests performed per practice and the number of tests per 1000 registered patients in New Zealand.

	Number of tests	Tests per 1000 patients	Avg. number of tests	Tests per 1000 patients	Avg. number of tests	Tests per 1000 patients
Antenatal	Practice		Your Quartile		National	
Antenatal subsequent groups	27	14.3	35.3	15.2	70.6	17.1
First antenatal group	21	11.1	21.9	9.4	44.1	10.7
HIV antenatal screening	0	0.0	13.3	5.7	25.8	6.2

	Number of tests	Tests per 1000 patients	Avg. number of tests	Tests per 1000 patients	Avg. number of tests	Tests per 1000 patients
Cytology and Morbid Histology	Practice		Your Quartile		National	
Cervical Screening (NCSP)	186	98.5	237.8	102.3	421.3	101.9
Histology (per accession)	124	65.6	117.6	50.6	199.0	48.1

	Number of tests	Tests per 1000 patients	Avg. number of tests	Tests per 1000 patients	Avg. number of tests	Tests per 1000 patients
Diagnostic Immunological & Serological Tests	Practice		Your Quartile		National	
Autoantibodies, other	187	99.0	106.4	45.8	186.6	45.2
Auto-immune disease, anti-nuclear antibody	63	33.4	38.1	16.4	64.6	15.6
Auto-immune disease, thyroid	12	6.4	25.4	10.9	44.9	10.9
Chlamydia direct antigen test	51	27.0	131.4	56.6	256.8	62.1
CM virus, specific antibody titre	2	1.1	14.4	6.2	28.4	6.9
C-reactive protein test	372	196.9	501.7	215.9	845.5	204.6
Epstein-Barr virus IgG antibody	12	6.4	18.6	8.0	31.3	7.6
Giardia direct antigen test	18	9.5	35.0	15.1	65.1	15.8
Hepatitis B - (Anti HBs) antibody	24	12.7	39.1	16.8	72.7	17.6
Hepatitis B - (HBsAg) surface antigen	23	12.2	44.0	18.9	80.0	19.4
Hepatitis C antibody	17	9.0	33.2	14.3	59.2	14.3
HIV Screen test	25	13.2	38.6	16.6	77.4	18.7
Prostate Specific Antigen (PSA)	298	157.8	228.6	98.4	364.7	88.2
Rheumatoid factor - Rose Waaler test	34	18.0	36.4	15.7	60.3	14.6
Skin tests, immediate hypersensitivity	115	60.9	64.4	27.7	128.4	31.1

	Number of tests	Tests per 1000 patients	Avg. number of tests	Tests per 1000 patients	Avg. number of tests	Tests per 1000 patients
Electrolyte Tests	Practice		Your Quartile		National	
Calcium, serum	69	36.5	196.7	84.7	315.9	76.5
Chloride, serum	58	30.7	17.9	7.7	66.4	16.1
Magnesium, serum	24	12.7	47.9	20.6	68.0	16.5
Phosphate, serum	63	33.4	160.4	69.0	247.7	59.9
Sodium & Potassium, serum	469	248.3	1,000.8	430.7	1,807.9	437.5

	Number of tests	Tests per 1000 patients	Avg. number of tests	Tests per 1000 patients	Avg. number of tests	Tests per 1000 patients
Enzyme Tests	Practice		Your Quartile		National	
Alanine transaminase - ALT	2	1.1	32.9	14.2	74.2	18.0

	Number of tests	Tests per 1000 patients	Avg. number of tests	Tests per 1000 patients	Avg. number of tests	Tests per 1000 patients
Enzyme Tests (cont)	Practice		Your Quartile		National	
Alkaline phosphatase, serum	9	4.8	17.0	7.3	46.7	11.3
Amylase	16	8.5	35.4	15.2	63.4	15.3
Aspartate amino transferase, serum - AST	1	0.5	22.0	9.5	46.4	11.2
Creatine kinase, serum (CK)	14	7.4	38.2	16.4	62.8	15.2
Gamma glutamyl transferase, serum (GGT)	0	0.0	20.6	8.9	38.4	9.3

	Number of tests	Tests per 1000 patients	Avg. number of tests	Tests per 1000 patients	Avg. number of tests	Tests per 1000 patients
Faeces Tests	Practice		Your Quartile		National	
Faecal occult blood	13	6.9	54.2	23.3	89.8	21.7

	Number of tests	Tests per 1000 patients	Avg. number of tests	Tests per 1000 patients	Avg. number of tests	Tests per 1000 patients
Glucose Tests	Practice		Your Quartile		National	
Glucose Tolerance Test post-polycose	12	6.4	16.4	7.1	32.9	8.0
Glycated haemoglobin (HbA1c)	702	371.6	900.4	387.4	1,558.9	377.2
Plasma glucose	130	68.8	263.8	113.5	463.0	112.0

	Number of tests	Tests per 1000 patients	Avg. number of tests	Tests per 1000 patients	Avg. number of tests	Tests per 1000 patients
Haematology Tests	Practice		Your Quartile		National	
Complete blood count (CBC)	946	500.8	1,315.9	566.3	2,302.1	557.1
Erythrocyte sedimentation rate (ESR)	97	51.3	104.8	45.1	186.8	45.2
Fibrinogen (quantitative)	19	10.1	11.6	5.0	24.2	5.9
Plasma prothrombin ratio (INR)	452	239.3	430.6	185.3	734.4	177.7

	Number of tests	Tests per 1000 patients	Avg. number of tests	Tests per 1000 patients	Avg. number of tests	Tests per 1000 patients
Haemopoietic Tests	Practice		Your Quartile		National	
Ferritin, serum	499	264.2	601.8	259.0	1,040.5	251.8
Folate plus vitamin B12, serum	292	154.6	319.5	137.5	544.9	131.8
Iron binding capacity, serum	70	37.1	92.6	39.9	136.2	33.0
Iron, serum	73	38.6	182.7	78.6	287.3	69.5
Transferrin, serum	3	1.6	90.2	38.8	151.1	36.6

	Number of tests	Tests per 1000 patients	Avg. number of tests	Tests per 1000 patients	Avg. number of tests	Tests per 1000 patients
Lipid Tests	Practice		Your Quartile		National	
Lipid group test	591	312.9	792.7	341.1	1,333.7	322.7

	Number of tests	Tests per 1000 patients	Avg. number of tests	Tests per 1000 patients	Avg. number of tests	Tests per 1000 patients
Liver Tests	Practice		Your Quartile		National	
Bilirubin total, serum	0	0.0	7.5	3.2	27.9	6.7
Liver function group	645	341.5	875.8	376.9	1,506.4	364.5

	Number of tests	Tests per 1000 patients	Avg. number of tests	Tests per 1000 patients	Avg. number of tests	Tests per 1000 patients
Microbiology Tests	Practice		Your Quartile		National	
Enteric pathogens (faeces or rectal swab)	31	16.4	52.7	22.7	93.0	22.5
Mycology - skin	32	16.9	22.9	9.9	42.6	10.3
Ova and cysts	18	9.5	26.9	11.6	49.2	11.9

	Number of tests	Tests per 1000 patients	Avg. number of tests	Tests per 1000 patients	Avg. number of tests	Tests per 1000 patients
Microbiology Tests (cont)	Practice		Your Quartile		National	
Swab, cervical	0	0.0	26.0	11.2	42.4	10.3
Swab, skin/wound/pus	80	42.4	92.3	39.7	176.7	42.7
Swab, throat	187	99.0	159.9	68.8	347.8	84.2
Swab, vaginal	70	37.1	140.4	60.4	274.3	66.4
Urine Culture	321	169.9	372.1	160.1	674.1	163.1
Protein Tests	Practice		Your Quartile		National	
Albumin, serum	24	12.7	79.1	34.0	147.3	35.6
Immunoglobulins (IgA, IgE, IgG, or IgM)	69	36.5	88.4	38.0	169.2	40.9
Microalbumin	67	35.5	187.2	80.5	330.5	80.0
Protein electrophoretic pattern, serum	12	6.4	31.5	13.5	49.6	12.0
Proteins, 24 hr. urine	2	1.1	14.9	6.4	30.2	7.3
Protein total, serum	13	6.9	24.5	10.6	46.4	11.2
Renal Tests	Practice		Your Quartile		National	
Creatinine, serum	905	479.1	1,215.0	522.8	2,122.3	513.6
Urate or uric acid, serum	81	42.9	291.7	125.5	487.5	118.0
Urea, serum	151	79.9	191.2	82.3	312.0	75.5
Reproductive System Tests	Practice		Your Quartile		National	
Chorionic Gonadotrophin qualitative plus quantitative (HCG)	29	15.4	51.8	22.3	101.2	24.5
Follicle stimulating hormone (FSH)	20	10.6	43.5	18.7	79.1	19.1
Luteinising hormone (LH)	23	12.2	44.4	19.1	84.5	20.4
Oestradiol, serum	22	11.6	39.2	16.9	74.0	17.9
Progesterone, serum	18	9.5	30.0	12.9	56.7	13.7
Prolactin, serum	8	4.2	19.5	8.4	35.1	8.5
Serum Testosterone	20	10.6	16.7	7.2	31.4	7.6
Thyroid Tests	Practice		Your Quartile		National	
Free thyroxine index or free T4	76	40.2	210.0	90.4	347.2	84.0
Serum free T3	20	10.6	78.2	33.7	121.4	29.4
Thyroid stimulating hormone, serum (TSH)	391	207.0	636.7	274.0	1,103.8	267.1
Uncategorised Tests	Practice		Your Quartile		National	
Troponin T & Troponin I	24	12.7	26.0	11.2	47.5	11.5



visit us at **www.bpac.org.nz**

Call us on **03 477 5418** Email us at **contact@bpac.org.nz** Freefax us on **0800 27 22 69**