

Release Notes Medtech32

New Zealand Formulary (BPACNZRx) Integration



Drug Search

(February 2020)



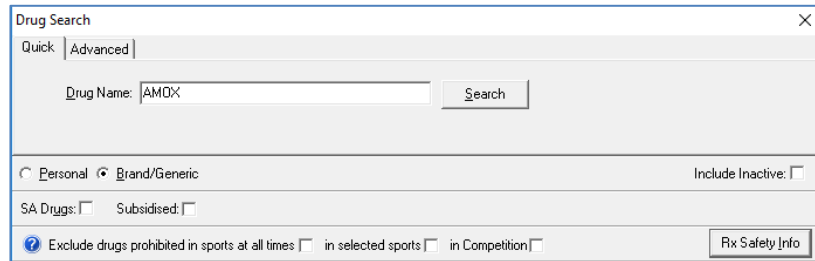
These release notes contain important information for Medtech32 users. Please ensure that they are circulated amongst all relevant staff. We suggest that this document is filed safely for future reference.

Contents

Drug Search	3
-------------	---

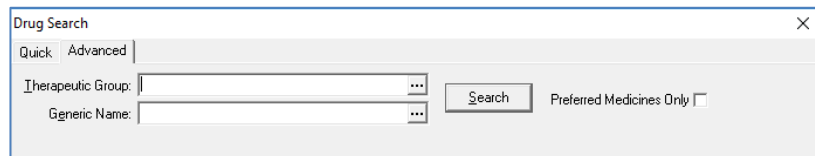
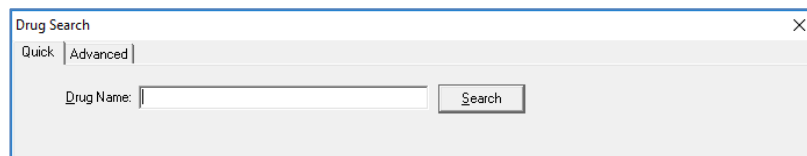
Drug Search

When searching for a medication to prescribe to the patient, the Drug Search screen will now perform the drug search within the NZF drug database.

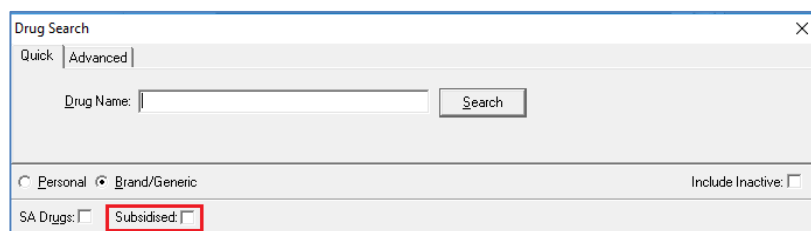


The following itemises the changes to the Drug Search screen for the BPACNZRx prescribing module:

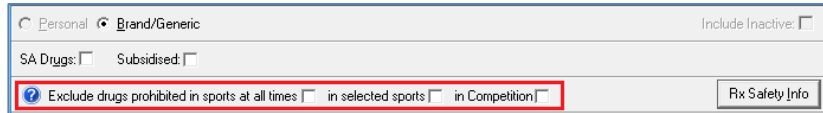
- Search by 'Therapeutic Options' has been removed from both the Quick and Advanced tabs



- The 'Sub' filter has been renamed to its full term 'Subsidised'

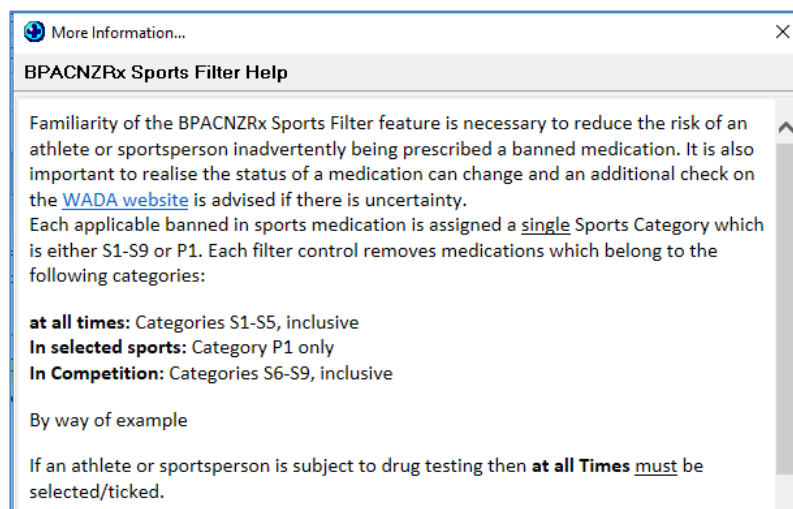


- Exclude 'Unsafe in Pregnancy' filter has been removed, as the pregnancy related information from the monograph will be displaying during prescribing which can be double clicked to open the monograph section to view the full contents.
- 'Exclude Banned in Sport' filter has been removed, and has been replaced with a new set of filter options which follow the World Anti-Doping Agency (WADA) classification of three categories:
 - Exclude drugs prohibited in sports at all times
 - Excluded in selected sports
 - Excluded in competition only



If a patient is a competitive athlete & subject to drug testing, then the 'Exclude drugs prohibited in sports at all times' must be checked. If they are an athlete in an eye/hand coordinated sport, which bans beta blockers, then the 'in selected sports' must be checked. Finally, if they are in competition or are about to compete, then 'in competition' must ALSO be checked.

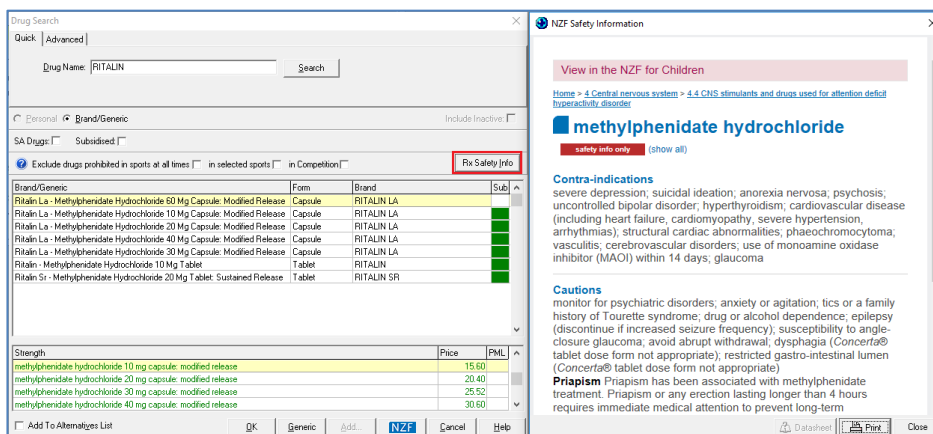
Clicking on the Help icon next to the new Sport filters will open and display Guidance on using these new filter controls.



- A new 'Rx Safety Info' feature has been added to the Drug Search screen.

The Rx Safety Info feature is an important new feature which can be used to ensure a drug is not contra-indicated in hepatic and renal impairment, pregnancy and breast-feeding.

Clicking on the Rx Safety Info button on the Drug Search screen after selecting a medication will open the NZF Safety Information screen.

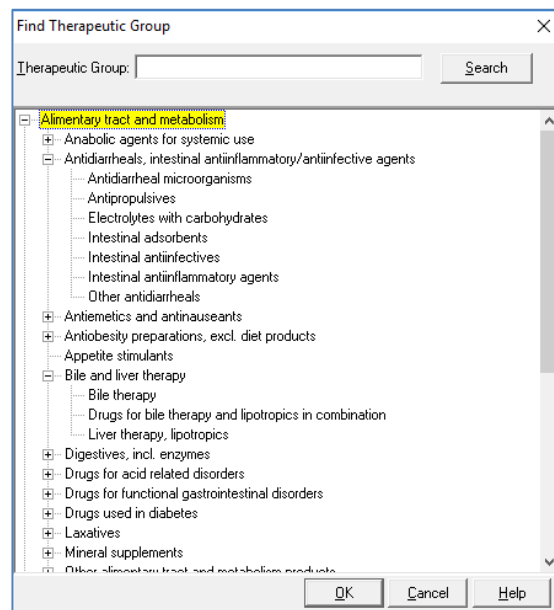


As the 'Unsafe in Pregnancy' filter has been removed, it is important that a prescriber refers to the 'Rx Safety Info' section carefully before prescribing.

Important Note – NZF Safety Information

Unlike MIMS the NZF Safety Information is not stored locally in the practice’s system. The NZF Safety Information is an online web-based resource, and requires an internet connection to be accessed. Being an online resource you can be assured that the information is as up to date as possible when using it, even if the latest drug update has not been run.

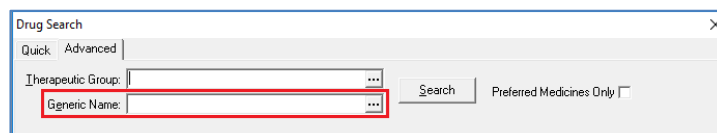
- Search by Therapeutic Group on the Advanced tab now provides a drill down to three levels of ATC (Anatomical Therapeutic Chemical) and is presented in a tree hierarchy



- The first level of the code indicates the anatomical main group
- The second level of the code indicates the therapeutic main group
- The third level of the code indicates the therapeutic/pharmacological sub-group

Please Note: Some levels may not display any medications which means no drugs are currently available within NZ that belong to the selected category.

- The ‘Generic Group’ option on the Advanced tab has been renamed to ‘Generic Name’



- Searching for all the preparations for a particular drug name will show the list of preparations in order of Strength.

Drug Search

Quick | Advanced

Drug Name: PARACETAMOL 125 Search

Personal | Brand/Generic Include Inactive

SA Drugs: Subsidised

Exclude drugs prohibited in sports at all times in selected sports in Competition Rx Safety Info

Brand/Generic	Form	Brand	Sub
Paracetamol 125 Mg Suppository (Panadol)	Suppository	PANADOL	
Paracetamol 125 Mg Suppository (Paracetamol (Pharmacy Health))	Suppository	PARACETAMOL (PHARMACY HEA...	
Paracetamol (Pharmacy Health) - Paracetamol 125 Mg Suppository	Suppository	PARACETAMOL (PHARMACY HEA...	
Paracetamol 125 Mg Suppository (Gacet)	Suppository	GACET	

Strength	Brand	Price	PKML
paracetamol 125 mg suppository	Gacet	3.29	
paracetamol 125 mg suppository	Paracetamol (Pharmacy Health)	0.00	
paracetamol 250 mg suppository	Paracetamol (Pharmacy Health)	0.00	
paracetamol 500 mg suppository	Paracetamol (Pharmacy Health)	0.00	

Add To Alternatives List

OK Brand Add NZF Cancel Help

In the interests of clinical safety and to assist in avoiding Prescribing errors, all medication 'sets' will be ordered by strength in ascending order, where the lowest strength is to be at the top and the highest at the bottom.

In addition, to support the predominantly prescribed subsidised medications, the subsidised medication will be selected by default within the strength grid which suppresses other non-subsidised equivalents to be displayed.

Brand/Generic	Form	Brand	Sub
Amoxicillin 100 Mg/MI Oral Liquid: Powder For (Amoxil Paediatric Drops)	MI	AMOXIL PAEDIATRIC DROPS	
Amoxil Paediatric Drops - Amoxicillin 100 Mg/MI Oral Liquid: Powder For	MI	AMOXIL PAEDIATRIC DROPS	
Amoxicillin 125 Mg/5 MI + Clavulanic Acid 31.25 Mg/5 MI Oral Liquid: Powder For	MI	ALPHA-AMOXICYCLAV	
Amoxicillin 125 Mg/5 MI Oral Liquid: Powder For (Moxlin)	MI	MOXLIN	
Amoxicillin 125 Mg/5 MI Oral Liquid: Powder For (Miloxly 125)	MI	MILOSLY 125	
Amoxicillin 125 Mg/5 MI Oral Liquid: Powder For (Amoxicillin Actavis)	MI	AMOXICILLIN ACTAVIS	
Amoxicillin Actavis - Amoxicillin 125 Mg/5 MI Oral Liquid: Powder For	MI	AMOXICILLIN ACTAVIS	
Amoxicillin 250 Mg Injection: Powder For (Amoxil)	Vial	AMOXIL	
Amoxil - Amoxicillin 250 Mg Injection: Powder For	Vial	AMOXIL	
Amoxicillin 250 Mg/5 MI + Clavulanic Acid 62.5 Mg/5 MI Oral Liquid: Powder For	MI	ALPHA-AMOXICYCLAV	
Amoxicillin 250 Mg/5 MI Oral Liquid: Powder For (Amoxicillin Actavis)	MI	AMOXICILLIN ACTAVIS	

Strength	Brand	Price	PKML
amoxicillin 125 mg/5 mL oral liquid: powder for	Miloxly 125	0.00	
amoxicillin 125 mg/5 mL oral liquid: powder for	Alphamox	1.20	

Prescribe OK Brand Add NZF Cancel Help



Meet Sara – she's here to help!

Are you looking for a quick answer to your support query or changes related to this release?

Sara, our Virtual Support Chat Bot is available within our Insight Customer Portal 24 hours a day, 7 days a week, whenever you need help.

All you need to do is type a question, and Sara will provide the answer. She has been trained on most of the questions we get asked regularly on our Support Desk.

If Sara cannot answer your support query, she will assist you in creating a Support Ticket or can pass you onto a member of our Customer Care team.

If you would like to ask Sara your next support query, log into Insight at insight.medtechglobal.com